



Presents

Sales and Marketing by:

Gokul Kripa
Sales and Marketing Pvt. Ltd.



BHUMIYA

ALANKAR





ABOUT

BHUMIJA ALANKAR MAIN & 1ST

Discover our Siwar township, where modern living harmonizes with nature's serenity. It has been designed with the blend of Modern Architecture, nestled amidst lush greenery, this community offers a tranquil lifestyle. Welcome to the perfect blend of urban convenience and natural beauty.

Connectivity from Township

- ➞ **Sindhi Camp Bus Stand**
Approx 25 Mins
- ➞ **Jaipur Junction Railway Station**
Approx 25 Mins
- ➞ **Vaishali Nagar**
Approx 15 Mins
- ➞ **200 Ft Bypass**
Approx 10 Mins
- ➞ **Capital Galleria Mall**
Approx 8 Mins
- ➞ **Kanakpura Railway Station**
Approx 8 Mins
- ➞ **Bindayaka Industrial Area**
Approx 5 Mins



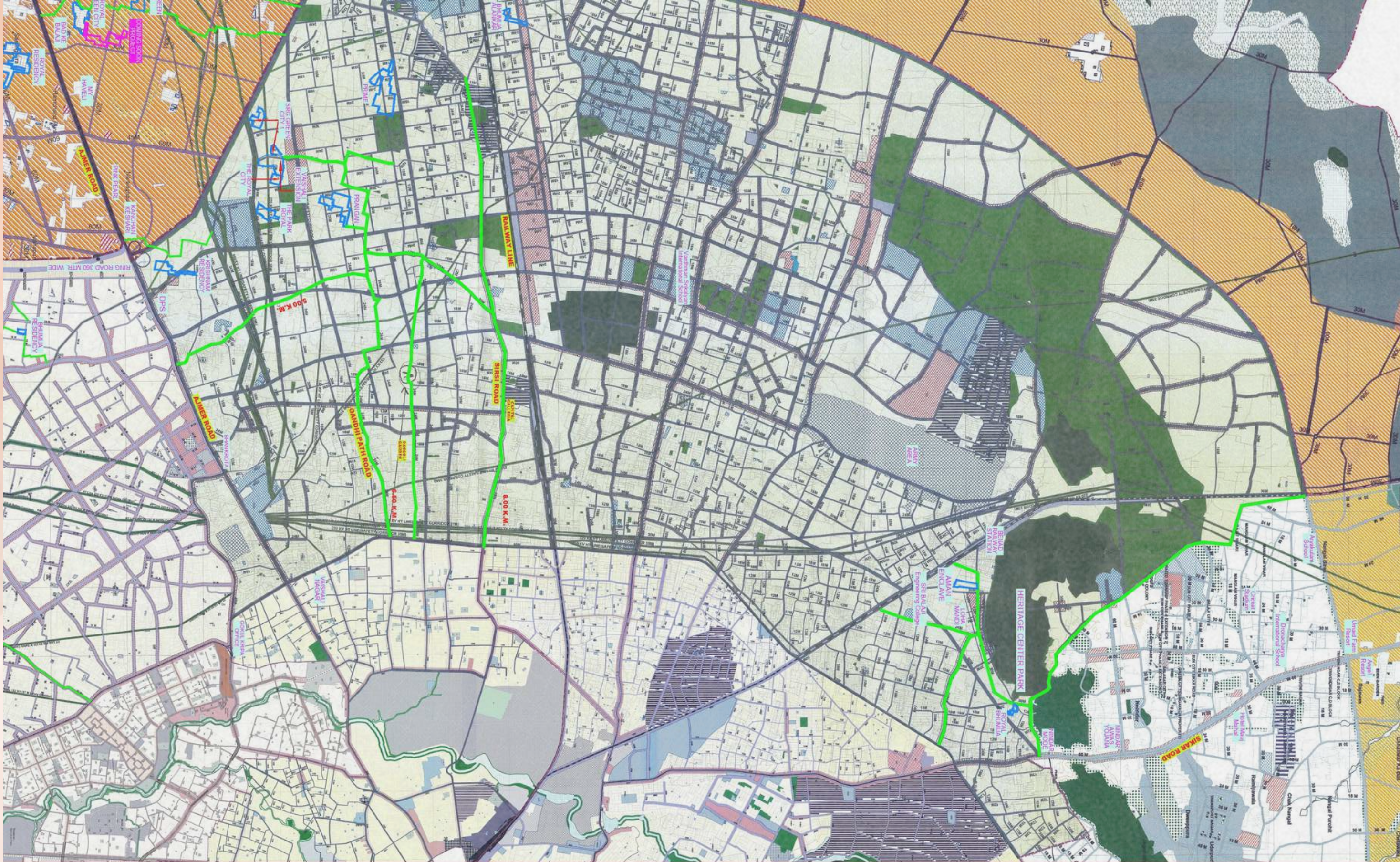
Connectivity from Township

- ➞ **Dhankiya Railway Station**
Approx 10 Mins
- ➞ **Shalby Multispeciality Hospital**
Approx 15 Mins
- ➞ **Alankar Girls P.G. College**
Approx 10 Mins
- ➞ **Aurobindo International School**
Approx 5 Mins
- ➞ **Maharishi Arvind University**
Approx 5 Mins
- ➞ **Biodiversity Forest Park (Rajasthan's Largest Park)**
Approx 15 Mins

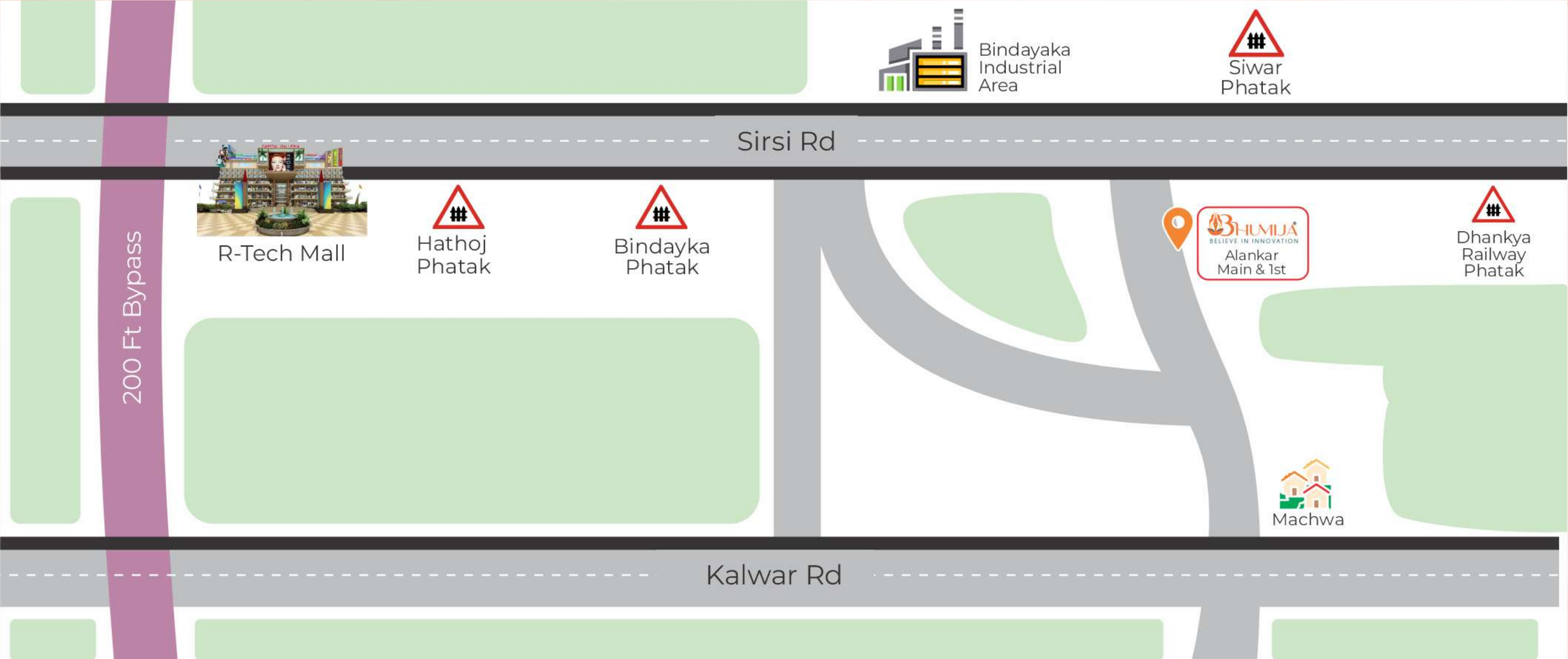




Zonal Map



Location Map





AMENITIES

B H U M I J A A L A N K A R M A I N & 1 S T



Entry Gate

Our township's entrance boasts a robust entry gate complete with state-of-the-art boom barriers. This security feature not only offers peace of mind but also ensures a controlled and organized flow of traffic within the community.



HERITAGE GARDEN



Top View



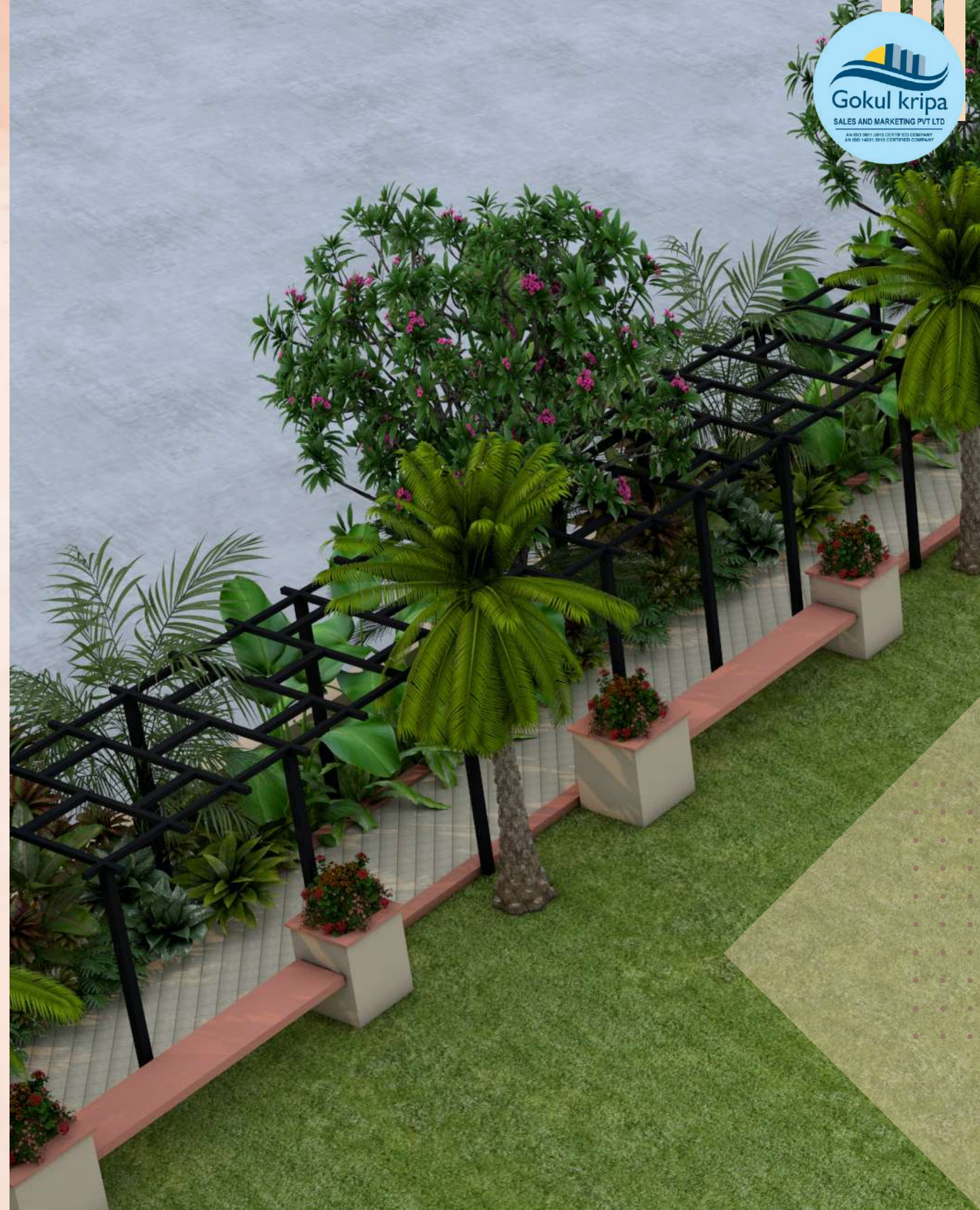
Yoga Zone

Discover serenity and well-being in our township's dedicated Yoga zone. Surrounded by nature, this tranquil space invites residents to find inner peace and improve their physical and mental health. It's a place to rejuvenate, practice mindfulness, and embrace a holistic lifestyle, fostering balance and harmony within our community.



Pathway

Our well-designed pathways meander throughout the township, connecting residents to parks, amenities, and neighboring communities. These walkways offer a safe and scenic route for pedestrians, enhancing accessibility and promoting a healthy, active lifestyle. Stroll, jog, or simply enjoy the serene ambiance of our thoughtfully constructed pathways.





Planter Sitting

In our township, we've thoughtfully integrated planter seating areas, harmoniously merging greenery and comfort. These inviting spaces provide residents with a serene retreat, offering the perfect fusion of relaxation and natural aesthetics. Here, you can unwind, connect with neighbors, and bask in the tranquil ambiance of our community.



Kids Play Area

In our township, we've created a vibrant and inviting kids' play area, where young minds can explore, play, and learn. This dedicated space is thoughtfully designed to encourage imaginative adventures and foster a sense of community.



Open Gym Area

Our township is proud to offer an open gym area, a place where residents can embrace a healthy lifestyle in the fresh air. Equipped with a range of fitness equipment, it's the ideal spot for workouts, promoting wellness, and fostering a strong, active community. Get ready to sweat and thrive.

GREEN HEAVEN GARDEN



A 3D architectural rendering of a garden layout. The central feature is a large, rectangular green lawn. Surrounding the lawn are several flower beds and planters. On the left, there is a circular planter with a tree. On the right, there is a rectangular planter with a tree. In the foreground, there is a gate structure with a central archway and two side pillars, all in a light beige color. The gate is set on a reddish-brown base. The garden is bordered by a light grey paved area. In the bottom right corner, there are some green trees. The text "Top View" is overlaid on the right side of the image.

Top View



Gazebo

Nestled in the heart of our township, a charming gazebo offers a serene retreat for residents. Surrounded by nature, this delightful structure provides a perfect spot for relaxation, social gatherings, or simply enjoying the outdoors. It's a tranquil haven where the community comes together to savor moments of peace and togetherness.



Accupressure Pathway

Our township offers an innovative Acupressure Pathway, a winding trail embedded with various pressure points designed to promote health and relaxation. Residents can take leisurely walks along this path, enjoying the therapeutic benefits of acupressure as they go. It's a unique feature that underscores our commitment to wellness and holistic living.



Guard Room

Our township prioritizes security with a dedicated guard room. Manned around the clock, it serves as the first line of defense, ensuring the safety and well-being of all residents.





Outer Boundary

Our township is safeguarded by a secure and well-maintained outer boundary, ensuring the safety and privacy of all residents. This protective barrier, meticulously designed, offers a sense of peace and serenity. It demarcates our haven, creating a welcoming environment where families can thrive and live with confidence.

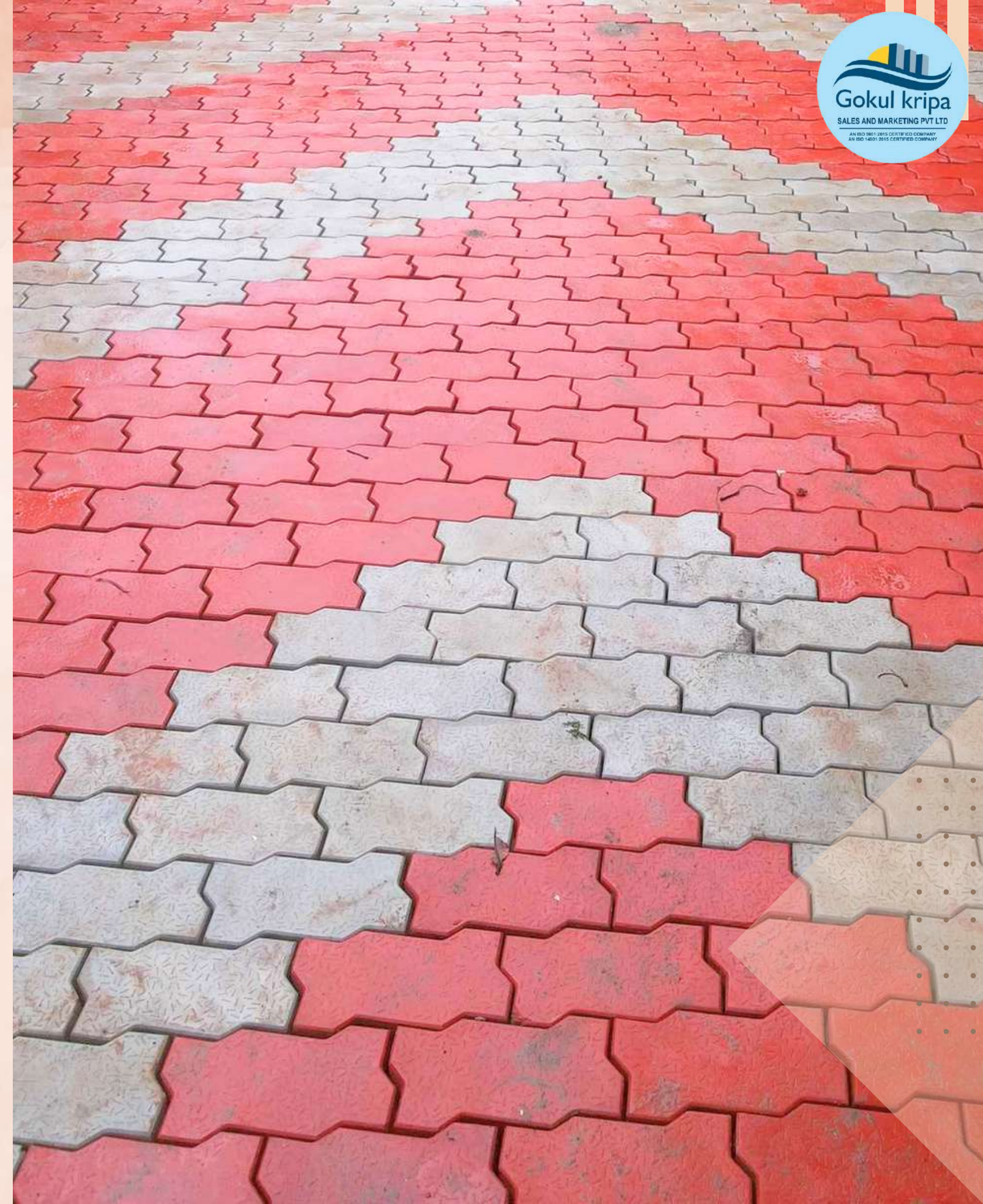
Block Boundary

In our township, each block is clearly defined and secured by sturdy block boundaries. These demarcations not only provide a sense of order but also contribute to property identification and land organization. They play a crucial role in upholding privacy and facilitating an organized and harmonious living environment for all residents.



Interlocking Tiles Road

Our township features meticulously laid interlocking tile roads, seamlessly connecting every corner of our community. These roads not only provide a smooth and durable surface for travel but also add a touch of elegance to our surroundings.





Signage

Our township proudly displays a well-crafted signage, a welcoming symbol of our community's identity. This signage not only directs and informs but also imparts a sense of belonging and pride to all residents and visitors. It stands as a testament to our shared journey and the spirit of unity within our township.



Overhead Storage Reservoir (OHSR)

Our township is fortified with a modern Overhead Water Storage Reservoir, ensuring a consistent and reliable water supply. This elevated infrastructure not only guarantees ample water for daily needs but also aids in pressure management, optimizing the distribution of clean water throughout our community. It reflects our commitment to seamless living.

Smart LED Street Lights

Our township is illuminated by cutting-edge Smart LED street lights. These energy-efficient lights not only enhance safety and visibility but also adapt to the environment, adjusting brightness as needed. With advanced technology, they reduce energy consumption, contribute to sustainability, and create a well-lit, eco-friendly atmosphere for all residents to enjoy.

Retail Shopping Centre

Nestled in the heart of our township, our retail shopping center offers a vibrant shopping experience for residents and visitors alike. With a diverse array of shops and services, it's a one-stop destination for all your needs.



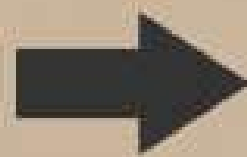
Solar System for Common Facilities

Our township takes a sustainable leap with a solar system for common facilities. Harnessing the power of the sun, this eco-friendly solution provides energy for shared amenities, reducing our carbon footprint and energy costs. It's a testament to our commitment to a greener, cleaner, and more efficient living environment for all.

Underground Sewage Line

Our township is equipped with an advanced underground sewage line system that discreetly and efficiently manages waste disposal. This essential infrastructure enhances hygiene, minimizes environmental impact, and ensures a clean living environment for all residents.

SEWER
PIPE



Individual Electric Connection

Every dwelling in our township enjoys the convenience of individual electric connections. This setup ensures reliable and dedicated power supply to each home, offering residents the freedom to manage their energy usage efficiently.





Individual Water Connection

In our township, residents benefit from the convenience of individual water connections, ensuring a continuous and dedicated water supply to every household. This system guarantees access to clean and safe water for daily needs, promoting a comfortable and hygienic living environment for all. Your well-being is our priority.

Underground Water Pipeline

Our township boasts a modern underground water pipeline network, providing a reliable and efficient water supply system. This infrastructure not only ensures a consistent flow of clean water but also minimizes the risk of contamination and reduces water wastage.





Thank You

Thank you for your esteemed presence in the launch of Bhumija Alankar Main & 1st. If you have any queries, Please let us know.

We're here to help!